

Table Of Contents

1.Safety Precautions	2
2.Important Safety Instructions	4
3.Accessories	6
4.Definition Of Terms	6
5.Preference	7
°^Precautions For Disc	7
°^Troubleshooting	7
°^Technical Specifications	8
°^Using Battery Pack	9
6.Name Of Parts	10
°^Main Unit	10
7.Connections	11
8.Preparations Before Operation	13
°^Playable Discs	13
9.Basic Operations	14
°^Before Operation	14
°^Loading Discs	14
°^Playing Discs	15
°^Pause	15
°^DVD Menu Play	15
10.MP3 Operation	16

Safety Precautions



- The lightning flash with arrowhead symbol within an equilateral triangle is intended to alert the user to the presence of uninsulated "dangerous voltage" within the product's enclosure that may be of sufficient magnitude to constitute risk of electric shock to persons.



- The exclamation point within an equilateral triangle is intended to alert the user to the presence of important operating and maintenance (servicing) instructions in the literature accompanying the product.

WARNING: To reduce the risk of fire or electric shock, do not expose this appliance to rain or moisture. Dangerous high voltage are present inside the enclosure. Do not open the cabinet.

CAUTION: To prevent electric shock, match wide blade plug to wide slot, fully insert.

CAUTION: The unit employs a laser system. To ensure the proper use of the unit, read this manual carefully and keep it for future reference. If the unit requires servicing, contact the seller or our service center-see "troubleshooting".

To prevent direct exposure to the laser radiation, do not open the cabinet. Invisible laser radiation when the cabinet is opened or the interlocks are defeated. Do not stare into the laser beams.

Use of any controls, adjustments, or procedures other than those specified herein may result in hazardous radiation exposure.

WARNING: Any change or modification to the unit, not expressly approved by **Disney** or its authorized parties, could void user's authority to operate the unit.

Safety Precautions

Power Sources

This unit operates on a supplied AC adaptor, car adaptor and chargeable batteries.

- ⦿ Make sure that the input voltage of the AC adaptor is in line with the local voltage. Otherwise, the AC adaptor and unit may be damaged.
- ⦿ Do not touch the AC adaptor with wet hand so as to avoid electric shocks.
- ⦿ When connecting with car power (cigarette lighter) adaptor, be sure the input voltage of the adaptor is identical with car voltage.
- ⦿ Unplug the AC adaptor from the outlet or remove the chargeable batteries when the unit is not used for a long time.
- ⦿ Hold the plug to disconnect the AC adaptor. Do not pull the power cord.

On Placement

Avoid placing the unit in the following places.

- ⦿ Under direct sunlight or near a source of heat such as a heater.
Never leave the unit in a closed automobile, on a dashboard or a parcel shelf. Excess heat may deform the cabin or cause malfunction.
- ⦿ Where it is very dusty or sandy.
- ⦿ Wet or humid places, such as bathroom.
- ⦿ Near sources of strong magnetism, such as television, speaker, or magnet.
- ⦿ Where there is a lot of movement or vibration, such as on a car dashboard or an unstable shelf.
- ⦿ Where it is extremely hot or cold.
- ⦿ Where the unit is exposed to rain or water.

For Safety

- ⦿ Do not disassemble the unit for laser rays are dangerous to eyes.
Any service should be done by qualified service personnel.

- ⦿ Unplug the AC adaptor to cut the power if liquid or objects get inside the unit.
- ⦿ Take care not to drop the unit or subject it to strong shocks, which may cause malfunction.

Note: When unit is in use for a long period of time, the surface of the unit will be heated. This should not effect the unit ability to playback.

Maintenance For Pickup

- ⦿ If the unit is suddenly moved from a cold place to a warm one to experience a rapid temperature change, or the unit is put in a humid place, moisture will condense on the pickup lens and result in malfunction or playback difficulties. In this case, unload the disc and leave the unit on for about one hour to evaporate the moisture.
- ⦿ Keep dust from the pickup lens. Keep the disc tray closed after use. If there is dust on the pickup lens, use a cleaning disc to clean them. Please refer to the operation instructions of the cleaning disc you bought.

When Using Headphones

- ⦿ To avoid hearing damages caused by sudden big volume, keep the volume at the lowest level before play back. Then adjust it to needed level.
- ⦿ Keep the volume lower to protect your ears.
- ⦿ Never wear headphones when driving or riding bicycle so as to avoid traffic accidents.

Important Safety Instructions

- (1) Read instructions - All the safety and operating instructions should be read before the product is operated.
- (2) Retain instructions - The safety and operating instructions should be retained for future reference.
- (3) Warnings - All warning on the product and in the operating instructions should be adhered to.
- (4) Follow instructions - All operating and use instructions should be followed.
- (5) Cleaning - Unplug this product from the wall outlet before cleaning. Do not use liquid cleaners or aerosol cleaners. Use a damp cloth for cleaning.
- (6) Attachments - Do not use attachments not recommended by the product manufacturer as they may cause hazards.
- (7) Water and moisture - Do not use this product near water - for example, near a bath tub, wash bowl, kitchen sink, or laundry tub; in a wet basement; or near a swimming pool; and the like.
- (8) Accessories - Do not place this product on an unstable cart, stand, tripod, bracket, or table. The product may fall, causing serious injury to a child or adult, and serious damage to the product. Use only with a cart, stand, tripod, bracket, or table recommended by the manufacturer, or sold with the product. Any mounting of the product should follow the manufacturer's instructions, and should use a mounting accessory recommended by the manufacturer.
- (9) A product and cart combination should be moved with care. Quick stops, excessive force and uneven surfaces may cause the product and cart combination to overturn.
- (10) Power Sources - This product should be operated only from the type of power source indicated on the rear panel. If you are not sure of the type of power supply to your home, consult your product dealer or local power company. For products intended to operate from battery power, or other sources, refer to the operating instructions.
- (11) Grounding or Polarization - This product may be equipped with a polarized alternating - current line plug (a plug having one blade wider than the other). This plug will fit into the power outlet only one way. This is a safety feature. If you are unable to insert the plug fully into the outlet, try reversing the plug. If the plug should still fail to fit, contact your electrician to replace your obsolete outlet. Do not defeat the safety purpose of the polarized plug.
- (12) Power - Cord Protection - Power - supply cords should be routed so that they are not likely to be walked on or pinched by items placed upon or against them, paying particular attention to cords at plugs, convenience receptacles, and the point where they exit from the product.
- (13) Lightning - For added protection for this product during a lightning storm, or when it is left unattended and unused for long periods of time, unplug it from the wall outlet and disconnect the antenna or cable system. This will prevent damage to the product due to lightning and power - line surges.

Important Safety Instructions

- (14) Power Lines - An outside antenna system should not be located in the vicinity of overhead power lines or other electric light or power circuits, or where it can fall into such power lines or circuits. When installing an outside antenna system, extreme care should be taken to keep from touching such power lines or circuits as contact with them might be fatal.
- (15) Overloading - Do not overload wall outlets, extension cords, or integral convenience receptacles as this can result in a risk of fire or electric shock.
- (16) Object and Liquid Entry - Never push objects of any kind into this product through result in a fire or electric shock. Never spill liquid of any kind on the product.
- (17) Servicing - Do not attempt to service this product yourself as it must be opened by qualified service personnel.
- (18) Damages Requiring Service - Unplug this product from the wall outlet and refer servicing to qualified service personnel under the following conditions.
- When the power - supply cord or plug is damaged.
 - If liquid has been spilled, or objects have fallen into the product.
 - If the product has been exposed to rain or water.
 - If the product does not operate normally by following the operating instructions.
- Adjust only those controls that are covered by the operating instructions as an improper adjustment of other controls may result in damage and will often require extensive work by a qualified technician to restore the product to its normal operation.
- If the product has been dropped or damaged in any way.
 - When the product exhibits a distinct change in performance - this indicates a need for service.
- (19) Replacement parts - When replacement parts are required, be sure the service technician has used replacement parts specified by the manufacturer or have the same characteristics as the original part. Unauthorized substitutions may result in fire, electric shock or other hazards.
- (20) Safety Check - Upon completion of any service or repair to this product, ask the service technician to perform safety checks to determine that the product is in proper operating condition.
- (21) Heat - The product should be situated away from heat sources such as radiators, heat registers, stoves or other products (including amplifiers) that produce heat.
- (22) During playback, few bright or dark flecks may appear on the TFT LCD, which is a normal phenomenon in active matrix display technology, but not a malfunction.

Accessories

Check if you have all the accessories after the carton is opened.

• Audio cable	1
• Video cable	1
• Stereo headphones	2
• Owner's manual	1
• AC power adaptor	1
• Rechargeable battery pack	1
• Battery charger	1
• Car cigarette adaptor	1
• Warranty card	1
• Warranty registration card	1
• NetFlix card	1
• "Y" adapter	1
• Custom fit carry bag	1
• Optional remote control function card	1

Definition Of Terms

• Title

The images or music of a DVD are divided into some units, among which title is the biggest one. To an image in video software, title is movie, to a piece of music in audio software, it is music.

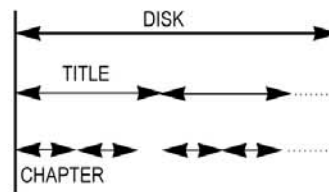
• Chapter

It is smaller than title among the units of a DVD. A title is made up of several chapters, and each chapter has a number for search. But some discs may not have numbered chapters.

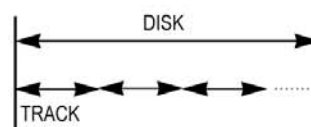
• Track

The music in a CD. Each track has a number for search.

Structure Of DVD



Structure Of CD



Preference

Precautions For Disc

HANDLING DISC

- ⦿ To keep the disc clean, do not touch the play sides of the disc
- ⦿ Do not attach paper or tape to the disc.



- ⦿ Keep the disc away from direct sunlight or heat sources.
- ⦿ Store the disc in a disc case after playback.
- ⦿ When removing disk from player apply pressure to center spindle and lift disk gently from outer edge toward center.

CLEANING DISC

- ⦿ Before playback, wipe the disc outwards from the center with clean cloth.



TroubleShooting

If you experience the following problems while using the unit, this troubleshooting guide can help you.

No sound

- ⦿ Check if the unit is connected securely.
- ⦿ Check if the volume of headphone is set to MIN when using headphone.
- ⦿ Make sure that you are correctly following your TV or amplifier's user guide when setting external equipment settings.

No image

- ⦿ Check if the unit is connected securely.
- ⦿ Make sure you operate the TV correctly.

Bad sound quality

- ⦿ Make sure the audio output mode is set correctly.
- ⦿ Make sure the audio connection between the unit and amplifier is right.

If your unit is not loading discs

- ⦿ There is no disc in the unit.
- ⦿ Put the disc on the disc tray properly with the label side up.
- ⦿ Clean the disc.
- ⦿ Moisture has condensed in the unit.
Remove the disc and leave the unit on for about one hour.

Image rolls and no color

The color system of the unit doesn't match with that of TV. Please select the correct TV TYPE until TV shows normal color.

For additional set-up or operating assistance, please contact Customer Service at (866) 709-9500.

Preference

Technical Specifications

Laser	wavelength 650nm	
Video system	NTSC	
Frequency response	20Hz° ~ 20KHz ° ± 1dB	
Signal/noise ratio	° , 95dB	
Audio distortion + noise	° , -80(1KHz)	
Channel separation	° , 85dB	
Dynamic range	° , 85dB	
Output	Audio out (analog audio)	output level: 2V° ± 10% Load impedance: 10kΩ
	Audio out (digital audio)	output level: 1.6Vp - p
	Video out	output level: 1Vp - p° ± 20% Load impedance: 75Ω, imbalance, negative polarity
Power supply	DC 9V 2A	
Allowable motion temperature	5° ~ 35°Ê	
Power Consumption	° , 20W	
Dimensions	140° ± 145° ± 30mm	
Weight	Approx. 580g	

This manual is only for your reference, any change to the design and specifications will not be advised.

This product incorporates copyright protection technology that is protected by method claims of certain U.S. patents and other intellectual property rights owned by Macrovision Corporation and other rights owners. Use of this copyright protection technology must be authorized by Macrovision Corporation, and is intended for home and other limited viewing uses only unless otherwise authorized by Macrovision Corporation. Reverse engineering or disassembly is prohibited.

Preference

Using Battery Pack

The rechargeable battery pack is suitable when adapting the DVD player for portable use and when it is convenient for you to enjoy the unique functions of the DVD player outdoors. To recharge the battery:

1. Remove the battery pack from the DVD player (if being used) and attach it to the supplied battery charger. Then connect the battery pack output plug to the charger output jack. Connect the charger INPUT jack to the AC adapter output (DC 9V at 2.2A).



- Notes:
- 1) The input voltage of the battery charger is: DC9V, 2.2A;
 - 2) Generally, the battery pack can be charged and discharged about 500 times;
 - 3) The marking voltage of the battery pack is 7.4V, the capacity is 2200mAh. A special IC protection logic is included to prevent deformation caused by over-charging and over-discharging.
2. It takes about 6 hours to fully charge the battery pack; the red charging LED indicator goes out when charging is complete. Unplug the AC power supply cord from the AC adapter; then unplug the battery pack from the battery charger and attach it at the corresponding position at the back of the DVD player. Insert the plug of the battery pack to the DC IN jack of the DVD player.



- Notes:
- 1) A fully-charged battery pack will discharge automatically in a month, even if it remains unused.
 - 2) If the battery pack is not used for a long period of time, discharge it and store it in a place that is cool, dry and dark.
 - 3) When the battery pack is empty, LOW BATTERY will flash on the unit's LCD screen. In this case, stop using the unit, and recharge the battery.



3. Generally, after the battery pack is recharged, its continuously working time is as follows. For example:

Model	Operating status	Continuous playing time
DP501-C	Play DVD, TFT on	about 2 hours
	Play DVD, TFT off	about 4 hours

4. Conditions and attention:

While using the battery pack, the environmental temperature should be 5°C (41°F) to 35°C (95°F).

A newly purchased battery pack can only be used after being charged.

To undertake the longest service life of the battery pack, charge it under or close to indoor-temperature.

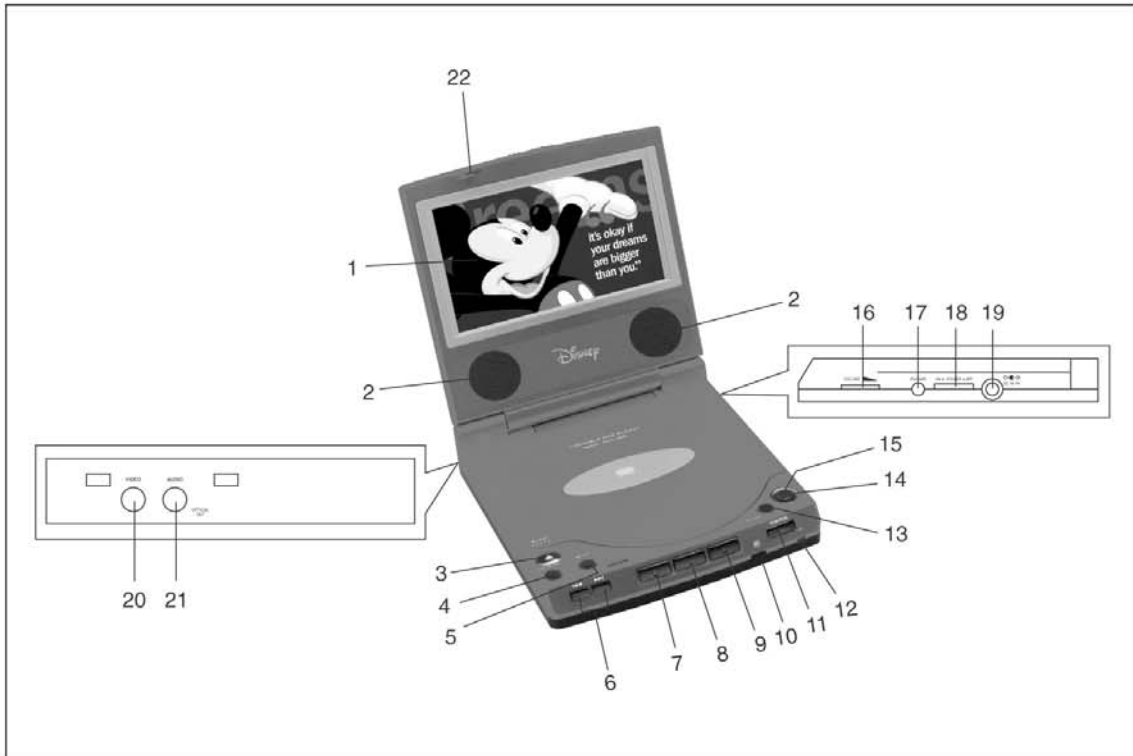
Never dispose of in fire, water or heat up.

Do not use in high temperature or near heat sources.

Never connect the positive and negative poles with metal.

Do not open the battery, refer servicing only to qualified service personnel.

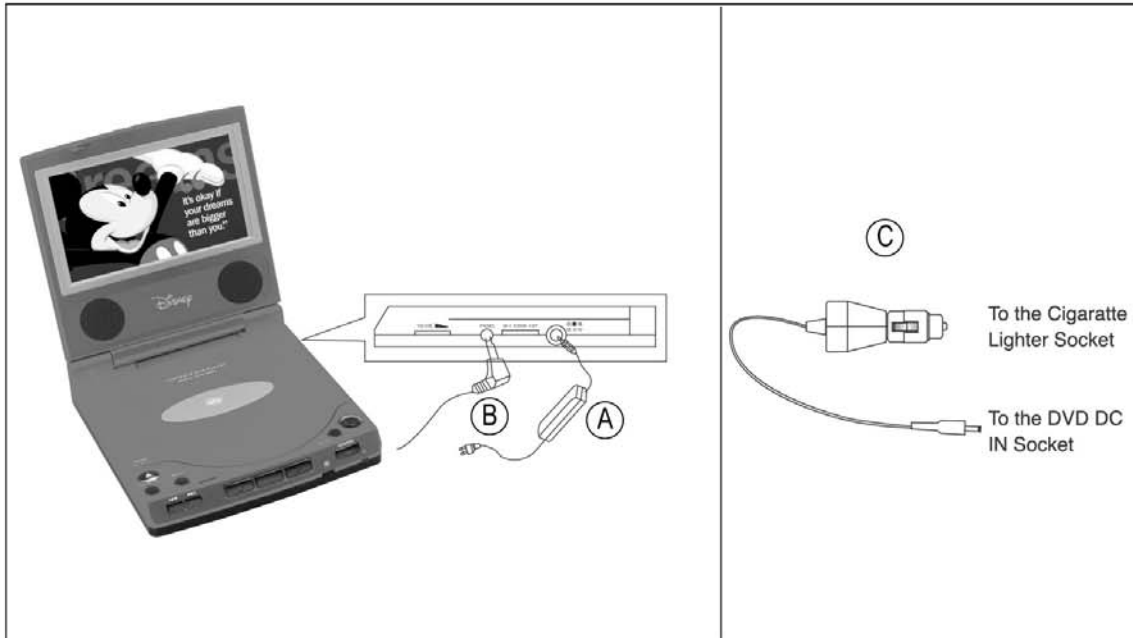
Name Of Parts



°~ Main Unit

- | | |
|--------------------|------------------------|
| (1) TFT LCD | (12) POWER INDICATOR |
| (2) SPEAKER | (13) RETURN |
| (3) PUSH OPEN | (14) DIRECTION BUTTONS |
| (4) TOP MENU | (15) ENTER |
| (5) MENU | (16) VOLUME |
| (6) PREVIOUS/NEXT | (17) PHONES JACK |
| (7) STOP | (18) POWER ON/OFF |
| (8) PAUSE | (19) DC IN |
| (9) PLAY | (20) VIDEO OUT |
| (10) REMOTE SENSOR | (21) AUDIO OUT/OPTICAL |
| (11) MONITOR | (22) LOCK |

Connections



BEFORE MAKING ANY CONNECTIONS

- Turn the DP501-C off and also make sure that the external equipment's power is turned off as well.
- Make sure that all the connections are secure.
- When disconnecting a cord or cable hold the plug of that cable and pull in the opposite direction of the external equipment. Do not pull from the cord, this could cause damage to the cord's plug.

USING THE AC ADAPTOR → (A)

The DP501-C is designed to use the AC adaptor.

- Make sure that your household electric sockets correspond with your AC adaptor's specifications.
- Insert the AC adaptor into the DP501-C's DC INPUT jack.
- Insert one end of the power supply cord into the input jack of the adaptor and the other end into the household electric socket.

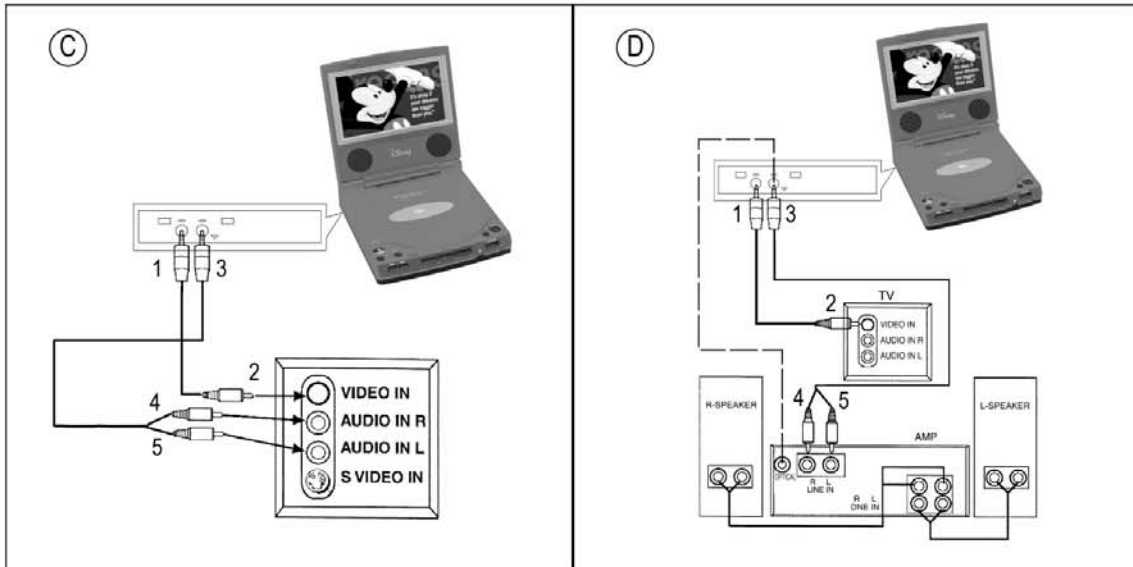
USE HEADPHONES → (B)

- Insert headphones into the phones jack B of the unit.
- Turn off the power when inserting or removing headphones.
- If you would like to hook up two pairs of headphones at one time, insert the jack of the included Y adapter into jack B. Insert the jacks of the headphones into either of the Y adapter's inputs.

USEING THE DC CAR ADAPTER

- The car adapter is used to connect the DVD player to the car power source (cigarette lighter)socket, and supplied power to the DVD player.
- Connect according to the diagram (C).

Connections



CONNECT TO A TV → (C)

Connect the AV cables according to diagram (C) :

1. Connect the yellow cable's Mini-plug to the DP501-C's VIDEO OUTPUT jack.
2. Connect the Yellow plug to the TV's VIDEO INPUT jack.
3. Connect the red and white Audio cable's Mini-plug to the DP501-C's AUDIO OUTPUT jack.
4. Connect the Red plug to the TV's AUDIO IN R jack.
5. Connect the White plug to the TV's AUDIO IN L jack.
6. After all connections have been made select the TV's correct input channel by pressing the TV's correct input channel selection button.

CONNECT TO A TV AND AN OPTIONAL EXTERNAL AMPLIFIER → (D)



Connect the AV cables according to diagram (D) :

1. Connect the yellow Video cable's Mini-plug to the DP501-C's VIDEO OUTPUT jack.
2. Connect the Yellow plug to the TV's VIDEO INPUT jack.
3. Connect the red and white Audio cable's Mini-plug to the DP501-C's AUDIO OUTPUT jack.
4. Connect the Red plug to the amplifier's AUDIO IN R jack.
5. Connect the White plug to the amplifier's AUDIO IN L jack.
6. If your amplifier has optical digital input terminal, you can connect the DVD player to the amplifier with an optical cable through the optical terminal.
7. After all connections have been made select the TV's correct input channel by pressing the TV's correct input channel selection button and configure the amplifier according to the amplifier's user guide.



Note: If the DP501-C's video signal is outputted through a VCR, Macrovision will be activated and distort the video playback. For a more detailed description of Macrovision refer to Pg.8.

Preparations Before Operation

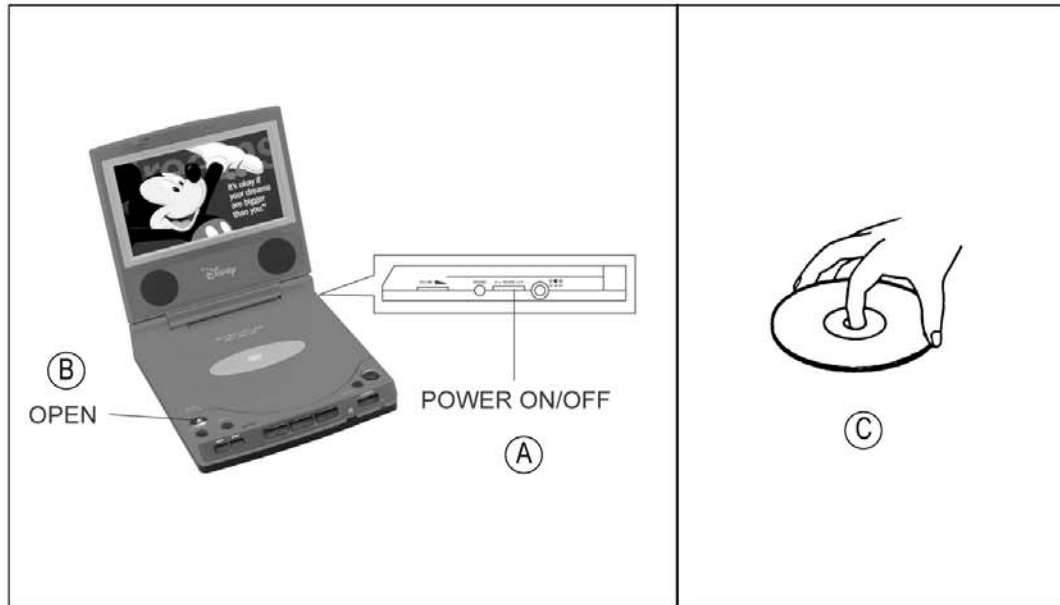
PLAYABLE DISCS

TYPE	DISC LOGO	CONTENT	SIZE	playing time
DVD		audio+video (motion pictures)	12cm	about 2hrs(single-side disc) about 4hrs (double-side disc)
			8cm	about 80mins(single-side disc) about 160mins(double-side disc)
			12cm	about 74mins
			8cm	about 20mins
MP3		audio	12cm	about 600mins

⦿ The marks shown in the following chart are used in the manual.

MARK	INDICATION
	functions of DVD
	functions of CD

Basic Operations



BEFORE OPERATION → (A)

- To power up the DP501-C slide the POWER ON/OFF switch shown in diagram A to ON.
- Slide the lock switch to the left and open the TFT screen to an upright position.
- Turn the VOLUME wheel to adjust the volume to preferred levels. The volume knob also controls the headphones volume as well.
- When the DP501-C is connected to a TV or an amplifier adjust the volume according to the external equipment's user guide.

Note: If headphones are plugged into the AUDIO OUTPUT jack instead of the PHONES jack the VOLUME wheel will not control the headphone's volume. To prevent this from happening make sure headphones are always plugged into the PHONES jack.

LOADING AND UNLOADING DISCS → (B) and (C)

- Press the OPEN button shown in diagram B to open the disc tray.
- To load a disc refer to diagram C and follow the directions below.
 - Hold the edge of the disc and align the center of the disk with the center of the disk tray.
 - Once the center of the disc is aligned with the center of the disk tray press the center of the disc so it is firmly seated under the spindle's pins shown in diagram C.
 - Close the disc tray and wait until it clicks.
- When removing disk from player apply pressure to center spindle and lift disk gently from outer edge toward center.

Basic Operations

Playing Discs



1. Load a disc and press ► (PLAY) to play the disc.
 2. Stop playback.
Press °^.
 3. Remove the disc and switch off the unit.
- ⊛ You have to press this " °^ " button twice to stop the playback of DVD discs.

Pause



Press

- ⊛ Pause multi-media playback by pressing the pause button .

After the pause button has been pressed the unit will go into step mode shown in diagram A.

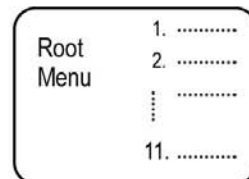


- ⊛ When the DP501-C is in step mode it can advance playback frame by frame every time the pause button is pressed.
To resume playback press the play button ►.

DVD Menu Play

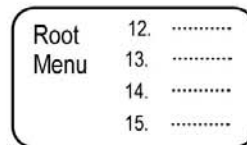


Some DVDs have title menus and chapter menus.
Press ► (PLAY), the screen shows the menu.
Press ►► or ◀◀ to skip the next or previous page, select with number buttons or direction buttons.

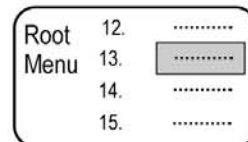


Example: select track 13.

1. Press ►► to enter the next menu.



2. Press ▼ to select track 13.



3. Press ► (PLAY) to start playing track 13.

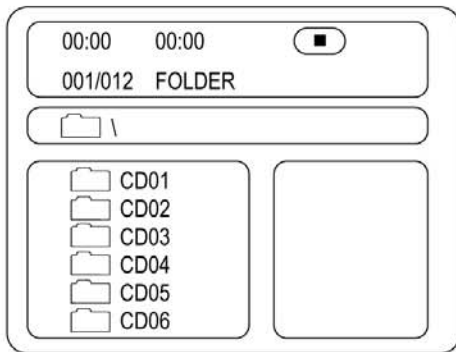
Press **TOP MENU** once to return to the title menu.

Press **MENU** once to return to the root menu.

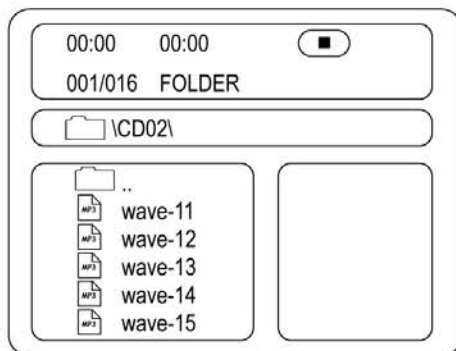
MP3 Operation

°~ Select Tracks With Menu

1. Insert an MP3 disc and wait for the unit to display the following MP3 menu.



2. Press direction key ▼ to select song folder. Press ► (PLAY) to confirm selection. Example: Select CD02, the TV screen displays.



3. Press direction buttons to select a song.
Press ► (PLAY) button to start playback.
4. Press ▲ or ▼ button to select other tracks, and press ► (PLAY) button to play.
5. In stop mode, select the folder icon on the left side, then press ► (PLAY) button to return to the main menu.
6. Press ►►| or |◄◄ to play previous or next songs.

FOR TECHNICAL SUPPORT AND CUSTOMER SERVICE PLEASE CONTACT
MINTEK DIGITAL INC.
4915 E. HUNTER AVENUE
ANAHEIM, CALIF 92807

714-222-3090 OR

1-866-709-9500